



K1 7 S



- | | |
|---|--|
|  Boat: 5.2 x 0.41 m |  Constructions: |
|  Cockpit: 0.39 x 0.90 m | E: 7 Kg |
|  Seat to Footrests: 0.65 - 0.93 m | F: 11 Kg |
|  Stability: 1 (Very Unstable) | G: 11 Kg |
|  Athletes: < 65 Kg | SCS: 11 Kg |
| | WWR: 10Kg |

ABOUT THE BOAT

CONCEPT - Improve a winning boat by keeping the good attributes of the Cinco while offering a better feeling of speed and direction.

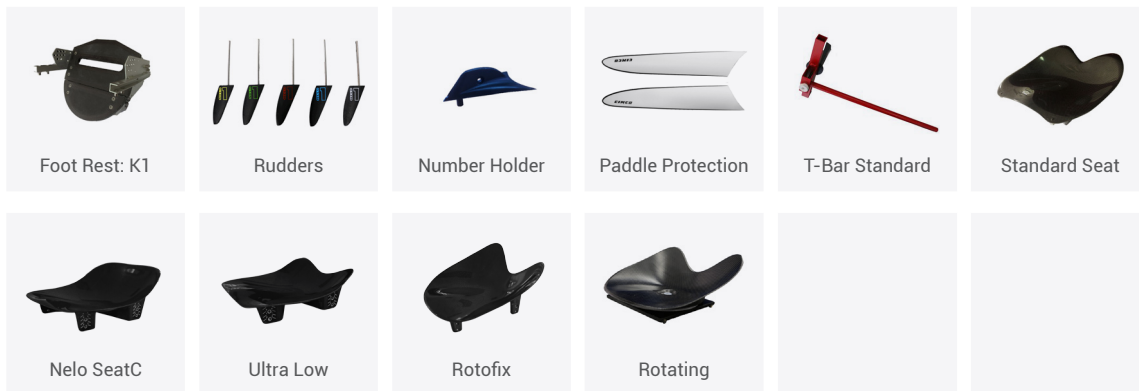
DESIGN - A new design that stays closer to the optimum trim for longer and reduces the pitch and heading amplitude. The new shape was also thought to contribute for the rigidity of the boats.

LAYUP - Improved stiffness with Unidirectional Carbon placed as a structural reinforcement net. 100% carbon reinforced rim adds rigidity on a structural part of the boat.

PERFORMANCE - Similar top speed, when compared with the Cinco, but with an improved speed loss curve, resulting in a more efficient boat that sustains the top speed for longer. Less heading movement and better stability allows for more powerful strokes and smoother glide.

SIZES - With the Sete we cover a wider athletes range weight, from 55kg to over 100kg. K1 and K2 Sete are now available in S, M, ML, L, XXL and XXXL sizes. The K4 will be available in 3 sizes: M, ML and L.

FITTINGS



See more at shop.nelo.eu

ADDRESS







Rua de Beche, 25
4485-105 Fajozes
Vila do Conde, Portugal

CONTACT

nelo@nelo.eu
(+351) 252 618 962
GPS: 41.326402, -8.717571

K1 7 M



- | | | | |
|---|---|---|-------------------|
|  | Boat: 5.2 x 0.41 m |  | Constructions: |
|  | Cockpit: 0.39 x 0.91 m | | E: 7 Kg |
|  | Seat to Footrests: 0.73 - 1.05 m | | F: 11 Kg |
|  | Stability: 1 (Very Unstable) | | G: 11 Kg |
|  | Athletes: 60 - 70 Kg | | SCS: 11 Kg |
| | | | WWR: 10Kg |

ABOUT THE BOAT

CONCEPT - Improve a winning boat by keeping the good attributes of the Cinco while offering a better feeling of speed and direction.

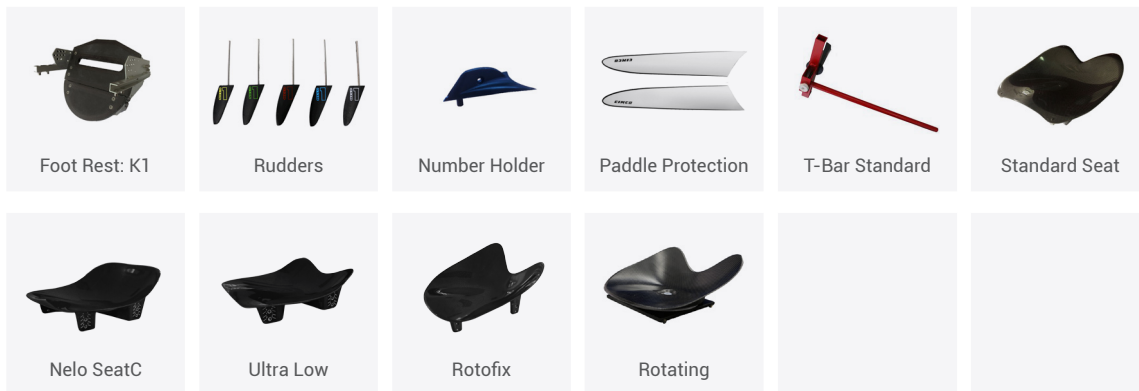
DESIGN - A new design that stays closer to the optimum trim for longer and reduces the pitch and heading amplitude. The new shape was also thought to contribute for the rigidity of the boats.

LAYUP - Improved stiffness with Unidirectional Carbon placed as a structural reinforcement net. 100% carbon reinforced rim adds rigidity on a structural part of the boat.

PERFORMANCE - Similar top speed, when compared with the Cinco, but with an improved speed loss curve, resulting in a more efficient boat that sustains the top speed for longer. Less heading movement and better stability allows for more powerful strokes and smoother glide.

SIZES - With the Sete we cover a wider athletes range weight, from 55kg to over 100kg. K1 and K2 Sete are now available in S, M, ML, L, XXL and XXXL sizes. The K4 will be available in 3 sizes: M, ML and L.

FITTINGS



See more at shop.nelo.eu

ADDRESS







Rua de Beche, 25
4485-105 Fajozes
Vila do Conde, Portugal

CONTACT

nelo@nelo.eu
(+351) 252 618 962
GPS: 41.326402, -8.717571

K1 7 ML



- | | |
|---|--|
|  Boat: 5.2 x 0.41 m |  Constructions: |
|  Cockpit: 0.39 x 0.94 m | E: 7 Kg |
|  Seat to Footrests: 0.74 - 1.05 m | F: 11 Kg |
|  Stability: 1 (Very Unstable) | G: 11 Kg |
|  Athletes: 70 - 80 Kg | SCS: 11 Kg |
| | WWR: 10Kg |

ABOUT THE BOAT

CONCEPT - Improve a winning boat by keeping the good attributes of the Cinco while offering a better feeling of speed and direction.

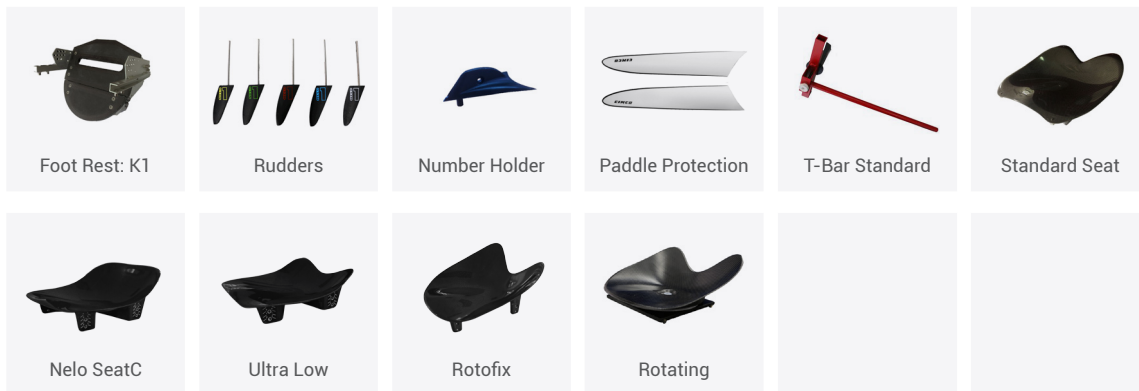
DESIGN - A new design that stays closer to the optimum trim for longer and reduces the pitch and heading amplitude. The new shape was also thought to contribute for the rigidity of the boats.

LAYUP - Improved stiffness with Unidirectional Carbon placed as a structural reinforcement net. 100% carbon reinforced rim adds rigidity on a structural part of the boat.

PERFORMANCE - Similar top speed, when compared with the Cinco, but with an improved speed loss curve, resulting in a more efficient boat that sustains the top speed for longer. Less heading movement and better stability allows for more powerful strokes and smoother glide.

SIZES - With the Sete we cover a wider athletes range weight, from 55kg to over 100kg. K1 and K2 Sete are now available in S, M, ML, L, XXL and XXXL sizes. The K4 will be available in 3 sizes: M, ML and L.

FITTINGS



See more at shop.nelo.eu

ADDRESS







Rua de Beche, 25
4485-105 Fajozes
Vila do Conde, Portugal

CONTACT

nelo@nelo.eu
(+351) 252 618 962
GPS: 41.326402, -8.717571

K1 7 L



- | | |
|---|--|
|  Boat: 5.2 x 0.41 m |  Constructions: |
|  Cockpit: 0.39 x 0.96 m | E: 7 Kg |
|  Seat to Footrests: 0.79 - 1.10 m | F: 11 Kg |
|  Stability: 1 (Very Unstable) | G: 11 Kg |
|  Athletes: 75 - 85 Kg | SCS: 11 Kg |
| | WWR: 10Kg |

ABOUT THE BOAT

CONCEPT - Improve a winning boat by keeping the good attributes of the Cinco while offering a better feeling of speed and direction.

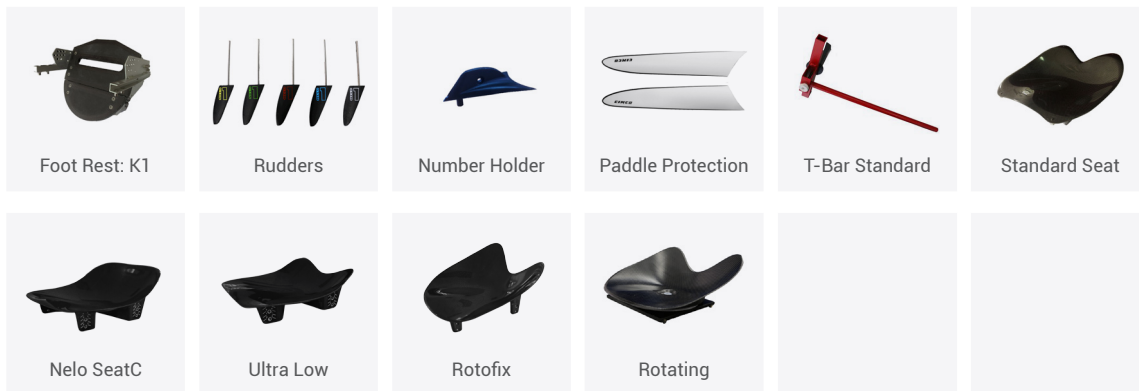
DESIGN - A new design that stays closer to the optimum trim for longer and reduces the pitch and heading amplitude. The new shape was also thought to contribute for the rigidity of the boats.

LAYUP - Improved stiffness with Unidirectional Carbon placed as a structural reinforcement net. 100% carbon reinforced rim adds rigidity on a structural part of the boat.

PERFORMANCE - Similar top speed, when compared with the Cinco, but with an improved speed loss curve, resulting in a more efficient boat that sustains the top speed for longer. Less heading movement and better stability allows for more powerful strokes and smoother glide.

SIZES - With the Sete we cover a wider athletes range weight, from 55kg to over 100kg. K1 and K2 Sete are now available in S, M, ML, L, XXL and XXXL sizes. The K4 will be available in 3 sizes: M, ML and L.

FITTINGS



See more at shop.nelo.eu

ADDRESS







Rua de Beche, 25
4485-105 Fajozes
Vila do Conde, Portugal

CONTACT

nelo@nelo.eu
(+351) 252 618 962
GPS: 41.326402, -8.717571

K1 7 XXL



- | | |
|---|--|
|  Boat: 5.2 x 0.41 m |  Constructions: |
|  Cockpit: 0.39 x 0.98 m | E: 7 Kg |
|  Seat to Footrests: 0.92 - 1.12 m | F: 11 Kg |
|  Stability: 1 (Very Unstable) | G: 11 Kg |
|  Athletes: 85 - 95 Kg | SCS: 11 Kg |
| | WWR: 10Kg |

ABOUT THE BOAT

CONCEPT - Improve a winning boat by keeping the good attributes of the Cinco while offering a better feeling of speed and direction.

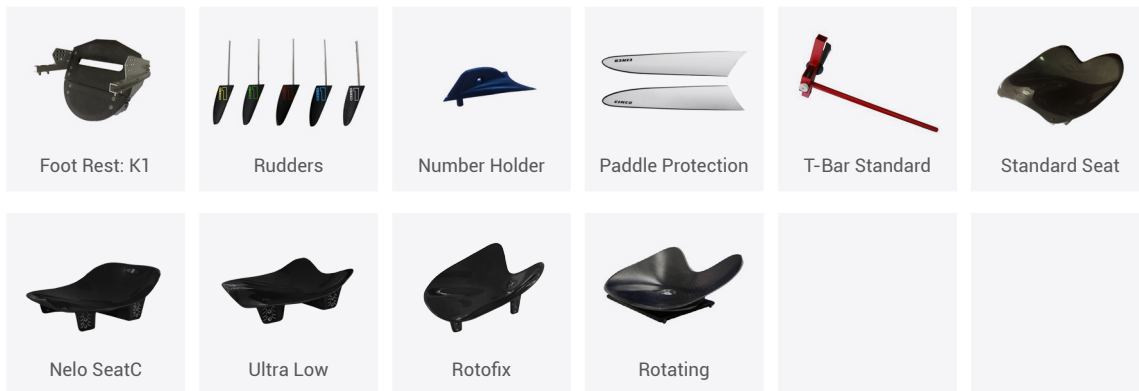
DESIGN - A new design that stays closer to the optimum trim for longer and reduces the pitch and heading amplitude. The new shape was also thought to contribute for the rigidity of the boats.

LAYUP - Improved stiffness with Unidirectional Carbon placed as a structural reinforcement net. 100% carbon reinforced rim adds rigidity on a structural part of the boat.

PERFORMANCE - Similar top speed, when compared with the Cinco, but with an improved speed loss curve, resulting in a more efficient boat that sustains the top speed for longer. Less heading movement and better stability allows for more powerful strokes and smoother glide.

SIZES - With the Sete we cover a wider athletes range weight, from 55kg to over 100kg. K1 and K2 Sete are now available in S, M, ML, L, XXL and XXXL sizes. The K4 will be available in 3 sizes: M, ML and L.

FITTINGS



See more at shop.nelo.eu

ADDRESS





Rua de Beche, 25
4485-105 Fajozes
Vila do Conde, Portugal

CONTACT

nelo@nelo.eu
(+351) 252 618 962
GPS: 41.326402, -8.717571

K1 7 XXXL



- | | |
|---|--|
|  Boat: 5.2 x 0.41 m |  Constructions: |
|  Cockpit: 0.39 x 1.03m | E: 7 Kg |
|  Seat to Footrests: 0.79 - 1.10 m | F: 11 Kg |
|  Stability: 1 (Very Unstable) | G: 11 Kg |
|  Athletes: > 90 Kg | SCS: 11 Kg |
| | WWR: 10Kg |

ABOUT THE BOAT

CONCEPT - Improve a winning boat by keeping the good attributes of the Cinco while offering a better feeling of speed and direction.

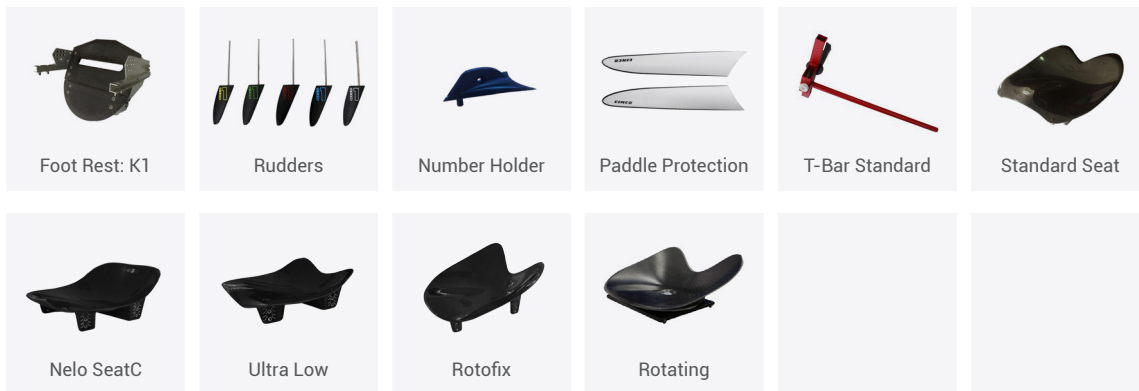
DESIGN - A new design that stays closer to the optimum trim for longer and reduces the pitch and heading amplitude. The new shape was also thought to contribute for the rigidity of the boats.

LAYUP - Improved stiffness with Unidirectional Carbon placed as a structural reinforcement net. 100% carbon reinforced rim adds rigidity on a structural part of the boat.

PERFORMANCE - Similar top speed, when compared with the Cinco, but with an improved speed loss curve, resulting in a more efficient boat that sustains the top speed for longer. Less heading movement and better stability allows for more powerful strokes and smoother glide.

SIZES - With the Sete we cover a wider athletes range weight, from 55kg to over 100kg. K1 and K2 Sete are now available in S, M, ML, L, XXL and XXXL sizes. The K4 will be available in 3 sizes: M, ML and L.

FITTINGS



See more at shop.nelo.eu

ADDRESS







Rua de Beche, 25
4485-105 Fajozes
Vila do Conde, Portugal

CONTACT

nelo@nelo.eu
(+351) 252 618 962
GPS: 41.326402, -8.717571

K2 7 S



- | | |
|---|--|
|  Boat: 6.5 x 0.41 m |  Constructions: |
|  Cockpit: 0.39 x 0.90 m | F: 17 Kg |
|  Seat to Footrests: 0.65 - 0.93 m | WWR: 16 Kg |
|  Stability: 1 (Very Unstable) | E: 11 Kg |
|  Athletes: < 140 Kg | SCS: 17 Kg |
| | G: 17 Kg |

ABOUT THE BOAT

CONCEPT - Improve a winning boat by keeping the good attributes of the Cinco while offering a better feeling of speed and direction.

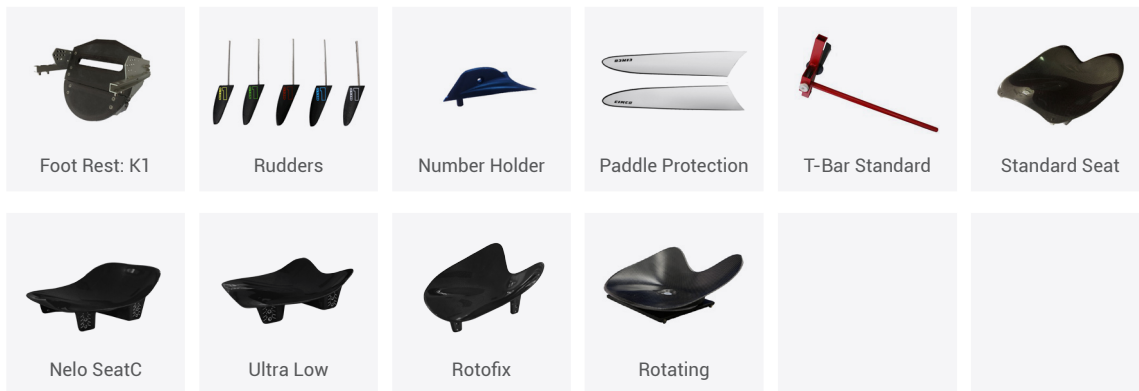
DESIGN - A new design that stays closer to the optimum trim for longer and reduces the pitch and heading amplitude. The new shape was also thought to contribute for the rigidity of the boats.

LAYUP - Improved stiffness with Unidirectional Carbon placed as a structural reinforcement net. 100% carbon reinforced rim adds rigidity on a structural part of the boat.

PERFORMANCE - Similar top speed, when compared with the Cinco, but with an improved speed loss curve, resulting in a more efficient boat that sustains the top speed for longer. Less heading movement and better stability allows for more powerful strokes and smoother glide.

SIZES - With the Sete we cover a wider athletes range weight, from 55kg to over 100kg. K1 and K2 Sete are now available in S, M, ML, L, XXL and XXXL sizes. The K4 will be available in 3 sizes: M, ML and L.

FITTINGS



See more at shop.nelo.eu

ADDRESS







Rua de Beche, 25
4485-105 Fajozes
Vila do Conde, Portugal

CONTACT

nelo@nelo.eu
(+351) 252 618 962
GPS: 41.326402, -8.717571

K2 7 M



- | | |
|---|--|
|  Boat: 6.5 x 0.41 m |  Constructions: |
|  Cockpit: 0.39 x 0.91 m | F: 17 Kg |
|  Seat to Footrests: 0.73 - 1.05 m | WWR: 16 Kg |
|  Stability: 1 (Very Unstable) | E: 11 Kg |
|  Athletes: < 140 Kg | SCS: 17 Kg |
| | G: 17 Kg |

ABOUT THE BOAT

CONCEPT - Improve a winning boat by keeping the good attributes of the Cinco while offering a better feeling of speed and direction.

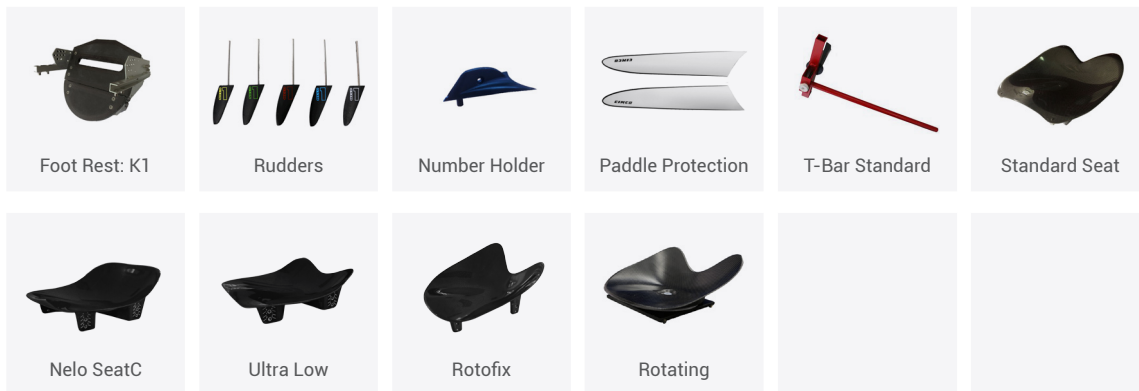
DESIGN - A new design that stays closer to the optimum trim for longer and reduces the pitch and heading amplitude. The new shape was also thought to contribute for the rigidity of the boats.

LAYUP - Improved stiffness with Unidirectional Carbon placed as a structural reinforcement net. 100% carbon reinforced rim adds rigidity on a structural part of the boat.

PERFORMANCE - Similar top speed, when compared with the Cinco, but with an improved speed loss curve, resulting in a more efficient boat that sustains the top speed for longer. Less heading movement and better stability allows for more powerful strokes and smoother glide.

SIZES - With the Sete we cover a wider athletes range weight, from 55kg to over 100kg. K1 and K2 Sete are now available in S, M, ML, L, XXL and XXXL sizes. The K4 will be available in 3 sizes: M, ML and L.

FITTINGS



See more at shop.nelo.eu

ADDRESS







Rua de Beche, 25
4485-105 Fajozes
Vila do Conde, Portugal

CONTACT

nelo@nelo.eu
(+351) 252 618 962
GPS: 41.326402, -8.717571

K2 7 ML



- | | |
|---|--|
|  Boat: 6.5 x 0.41 m |  Constructions: |
|  Cockpit: 0.39 x 0.94 m | F: 17 Kg |
|  Seat to Footrests: 0.74 - 1.05 m | WWR: 16 Kg |
|  Stability: 1 (Very Unstable) | E: 11 Kg |
|  Athletes: 140 - 150 Kg | SCS: 17 Kg |
| | G: 17 Kg |

ABOUT THE BOAT

CONCEPT - Improve a winning boat by keeping the good attributes of the Cinco while offering a better feeling of speed and direction.

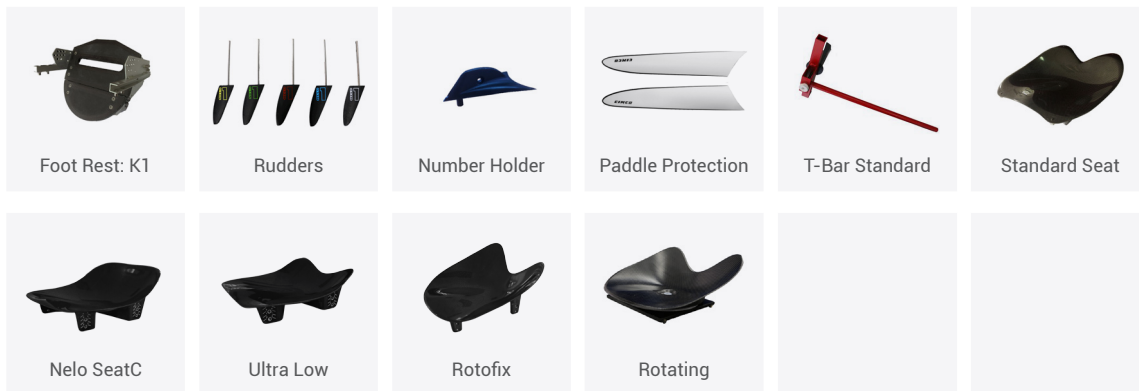
DESIGN - A new design that stays closer to the optimum trim for longer and reduces the pitch and heading amplitude. The new shape was also thought to contribute for the rigidity of the boats.

LAYUP - Improved stiffness with Unidirectional Carbon placed as a structural reinforcement net. 100% carbon reinforced rim adds rigidity on a structural part of the boat.

PERFORMANCE - Similar top speed, when compared with the Cinco, but with an improved speed loss curve, resulting in a more efficient boat that sustains the top speed for longer. Less heading movement and better stability allows for more powerful strokes and smoother glide.

SIZES - With the Sete we cover a wider athletes range weight, from 55kg to over 100kg. K1 and K2 Sete are now available in S, M, ML, L, XXL and XXXL sizes. The K4 will be available in 3 sizes: M, ML and L.

FITTINGS



See more at shop.nelo.eu

ADDRESS

Rua de Beche, 25
4485-105 Fajozes
Vila do Conde, Portugal

CONTACT

nelo@nelo.eu
(+351) 252 618 962
GPS: 41.326402, -8.717571

K2 7 L



- | | |
|---|-------------------|
| Boat: 6.5 x 0.41 m | Constructions: |
| Cockpit: 0.39 x 0.96 m | F: 17 Kg |
| Seat to Footrests: 0.79 - 1.10 m | WWR: 16 Kg |
| Stability: 1 (Very Unstable) | E: 11 Kg |
| Athletes: 150 - 160 Kg | SCS: 17 Kg |
| | G: 17 Kg |

ABOUT THE BOAT

CONCEPT - Improve a winning boat by keeping the good attributes of the Cinco while offering a better feeling of speed and direction.

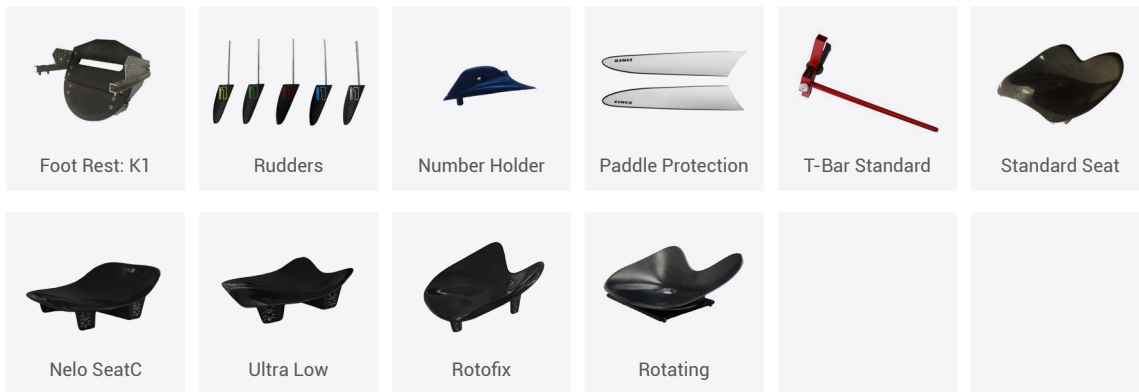
DESIGN - A new design that stays closer to the optimum trim for longer and reduces the pitch and heading amplitude. The new shape was also thought to contribute for the rigidity of the boats.

LAYUP - Improved stiffness with Unidirectional Carbon placed as a structural reinforcement net. 100% carbon reinforced rim adds rigidity on a structural part of the boat.

PERFORMANCE - Similar top speed, when compared with the Cinco, but with an improved speed loss curve, resulting in a more efficient boat that sustains the top speed for longer. Less heading movement and better stability allows for more powerful strokes and smoother glide.

SIZES - With the Sete we cover a wider athletes range weight, from 55kg to over 100kg. K1 and K2 Sete are now available in S, M, ML, L, XXL and XXXL sizes. The K4 will be available in 3 sizes: M, ML and L.

FITTINGS



See more at shop.nelo.eu

ADDRESS

Rua de Beche, 25
4485-105 Fajozes
Vila do Conde, Portugal

CONTACT

nelo@nelo.eu
(+351) 252 618 962
GPS: 41.326402, -8.717571

K2 7 XXL



- | | |
|---|--|
|  Boat: 6.5 x 0.41 m |  Constructions: |
|  Cockpit: 0.39 x 0.98 m | F: 17 Kg |
|  Seat to Footrests: 0.92 - 1.12 m | WWR: 16 Kg |
|  Stability: 1 (Very Unstable) | E: 11 Kg |
|  Athletes: > 160 Kg | SCS: 17 Kg |
| | G: 17 Kg |

ABOUT THE BOAT

CONCEPT - Improve a winning boat by keeping the good attributes of the Cinco while offering a better feeling of speed and direction.

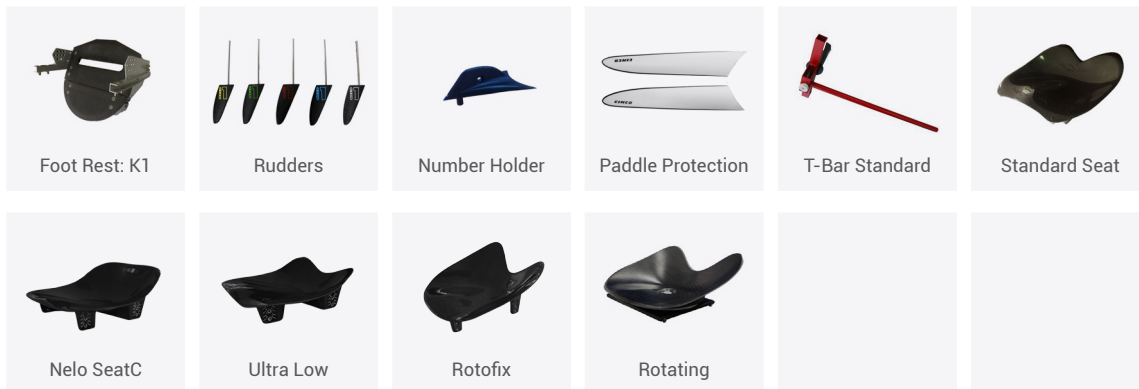
DESIGN - A new design that stays closer to the optimum trim for longer and reduces the pitch and heading amplitude. The new shape was also thought to contribute for the rigidity of the boats.

LAYUP - Improved stiffness with Unidirectional Carbon placed as a structural reinforcement net. 100% carbon reinforced rim adds rigidity on a structural part of the boat.

PERFORMANCE - Similar top speed, when compared with the Cinco, but with an improved speed loss curve, resulting in a more efficient boat that sustains the top speed for longer. Less heading movement and better stability allows for more powerful strokes and smoother glide.

SIZES - With the Sete we cover a wider athletes range weight, from 55kg to over 100kg. K1 and K2 Sete are now available in S, M, ML, L, XXL and XXXL sizes. The K4 will be available in 3 sizes: M, ML and L.

FITTINGS



See more at shop.nelo.eu

ADDRESS







Rua de Beche, 25
4485-105 Fajozes
Vila do Conde, Portugal

CONTACT

nelo@nelo.eu
(+351) 252 618 962
GPS: 41.326402, -8.717571

K2 7 XXXL



- | | |
|---|--|
|  Boat: 6.5 x 0.41 m |  Constructions: |
|  Cockpit: 0.39 x 1.03 m | F: 17 Kg |
|  Seat to Footrests: 0.90 - 1.15 m | WWR: 16 Kg |
|  Stability: 1 (Very Unstable) | E: 11 Kg |
|  Athletes: > 160 Kg | SCS: 17 Kg |
| | G: 17 Kg |

ABOUT THE BOAT

CONCEPT - Improve a winning boat by keeping the good attributes of the Cinco while offering a better feeling of speed and direction.

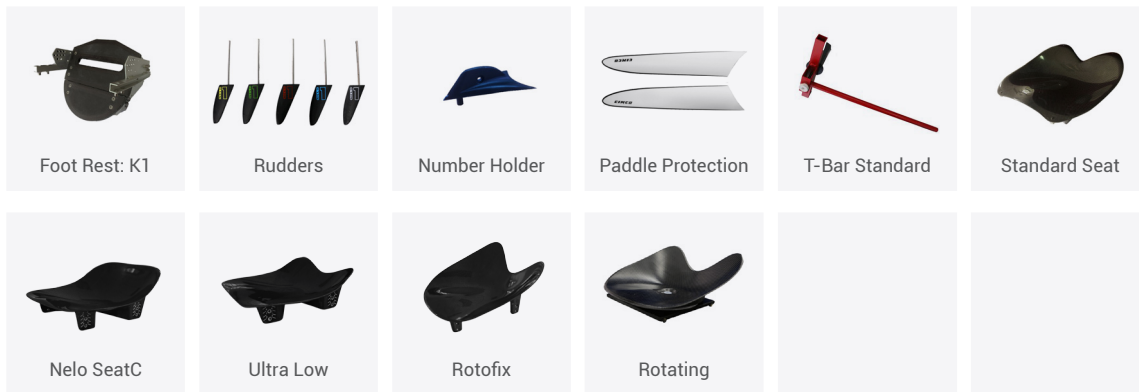
DESIGN - A new design that stays closer to the optimum trim for longer and reduces the pitch and heading amplitude. The new shape was also thought to contribute for the rigidity of the boats.

LAYUP - Improved stiffness with Unidirectional Carbon placed as a structural reinforcement net. 100% carbon reinforced rim adds rigidity on a structural part of the boat.

PERFORMANCE - Similar top speed, when compared with the Cinco, but with an improved speed loss curve, resulting in a more efficient boat that sustains the top speed for longer. Less heading movement and better stability allows for more powerful strokes and smoother glide.

SIZES - With the Sete we cover a wider athletes range weight, from 55kg to over 100kg. K1 and K2 Sete are now available in S, M, ML, L, XXL and XXXL sizes. The K4 will be available in 3 sizes: M, ML and L.

FITTINGS



See more at shop.nelo.eu

ADDRESS

Rua de Beche, 25
4485-105 Fajozes
Vila do Conde, Portugal

CONTACT

nelo@nelo.eu
(+351) 252 618 962
GPS: 41.326402, -8.717571

K4 7 M



-  Boat: **10 x 0.45 m**
 -  Cockpit: **0.39 x 0.91 m**
 -  Seat to Footrests: **0.73 - 1.05 m**
 -  Stability: **1 (Very Unstable)**
 -  Athletes: **<300 Kg**
-  Constructions:
 - G: 28 Kg**
 - SCS: 28 Kg**

ABOUT THE BOAT

CONCEPT - Improve a winning boat by keeping the good attributes of the Cinco while offering a better feeling of speed and direction.

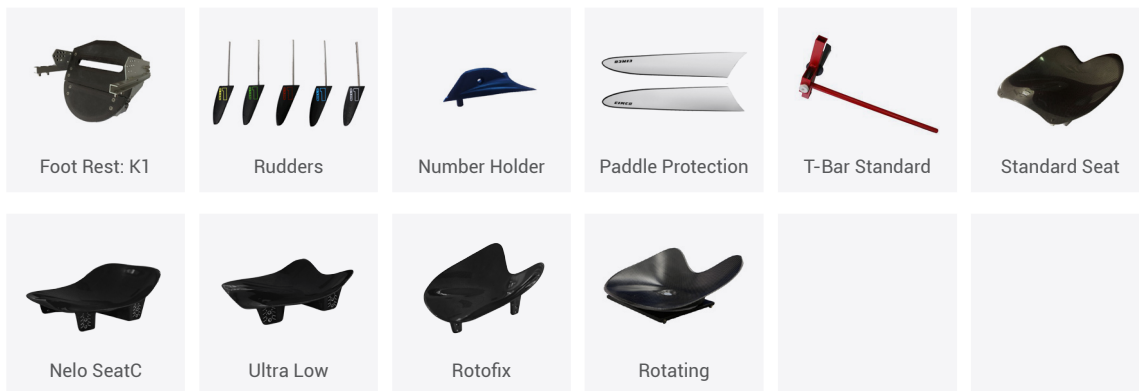
DESIGN - A new design that stays closer to the optimum trim for longer and reduces the pitch and heading amplitude. The new shape was also thought to contribute for the rigidity of the boats.

LAYUP - Improved stiffness with Unidirectional Carbon placed as a structural reinforcement net. 100% carbon reinforced rim adds rigidity on a structural part of the boat.

PERFORMANCE - Similar top speed, when compared with the Cinco, but with an improved speed loss curve, resulting in a more efficient boat that sustains the top speed for longer. Less heading movement and better stability allows for more powerful strokes and smoother glide.

SIZES - With the Sete we cover a wider athletes range weight, from 55kg to over 100kg. K1 and K2 Sete are now available in S, M, ML, L, XXL and XXXL sizes. The K4 will be available in 3 sizes: M, ML and L.

FITTINGS



See more at shop.nelo.eu

ADDRESS


Rua de Beche, 25
4485-105 Fajozes
Vila do Conde, Portugal

CONTACT

nelo@nelo.eu
(+351) 252 618 962
GPS: 41.326402, -8.717571

K4 7 ML



-  Boat: **10 x 0.45 m**
 -  Cockpit: **0.39 x 0.94 m**
 -  Seat to Footrests: **0.74 - 1.05 m**
 -  Stability: **1 (Very Unstable)**
 -  Athletes: **<300 Kg**
-  Constructions:
 - G: 28 Kg**
 - SCS: 28 Kg**

ABOUT THE BOAT

CONCEPT - Improve a winning boat by keeping the good attributes of the Cinco while offering a better feeling of speed and direction.

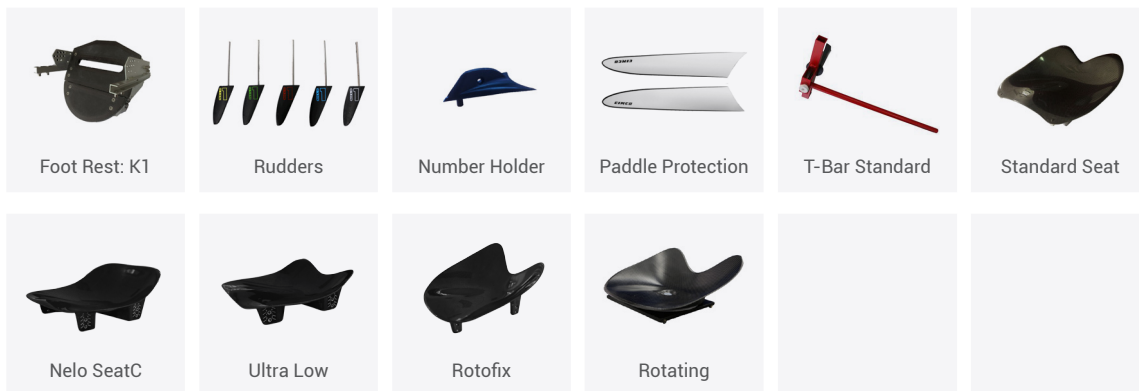
DESIGN - A new design that stays closer to the optimum trim for longer and reduces the pitch and heading amplitude. The new shape was also thought to contribute for the rigidity of the boats.

LAYUP - Improved stiffness with Unidirectional Carbon placed as a structural reinforcement net. 100% carbon reinforced rim adds rigidity on a structural part of the boat.

PERFORMANCE - Similar top speed, when compared with the Cinco, but with an improved speed loss curve, resulting in a more efficient boat that sustains the top speed for longer. Less heading movement and better stability allows for more powerful strokes and smoother glide.

SIZES - With the Sete we cover a wider athletes range weight, from 55kg to over 100kg. K1 and K2 Sete are now available in S, M, ML, L, XXL and XXXL sizes. The K4 will be available in 3 sizes: M, ML and L.

FITTINGS



See more at shop.nelo.eu

ADDRESS




Rua de Beche, 25
4485-105 Fajozes
Vila do Conde, Portugal

CONTACT

nelo@nelo.eu
(+351) 252 618 962
GPS: 41.326402, -8.717571

K4 7 L



-  Boat: **10 x 0.45 m**
 -  Cockpit: **0.39 x 0.96 m**
 -  Seat to Footrests: **0.79 - 1.10 m**
 -  Stability: **1 (Very Unstable)**
 -  Athletes: **<300 Kg**
-  Constructions:
 - G: 28 Kg**
 - SCS: 28 Kg**

ABOUT THE BOAT

CONCEPT - Improve a winning boat by keeping the good attributes of the Cinco while offering a better feeling of speed and direction.

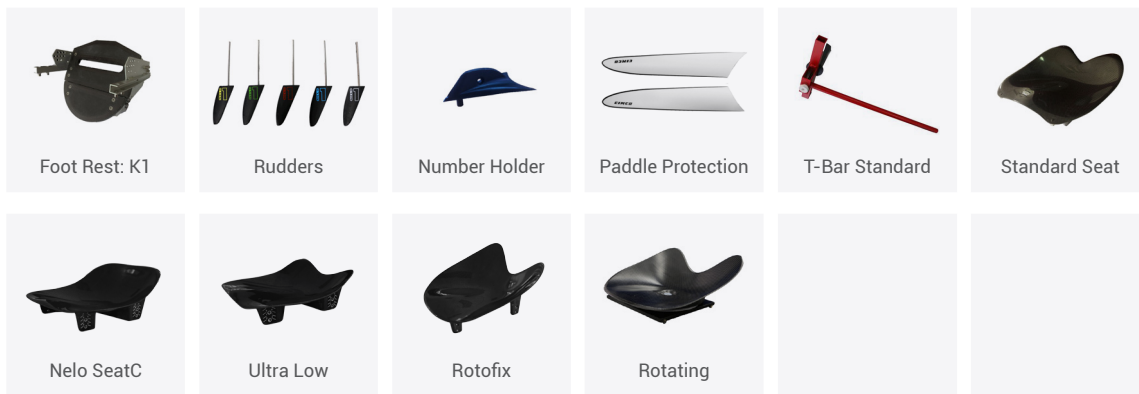
DESIGN - A new design that stays closer to the optimum trim for longer and reduces the pitch and heading amplitude. The new shape was also thought to contribute for the rigidity of the boats.

LAYUP - Improved stiffness with Unidirectional Carbon placed as a structural reinforcement net. 100% carbon reinforced rim adds rigidity on a structural part of the boat.

PERFORMANCE - Similar top speed, when compared with the Cinco, but with an improved speed loss curve, resulting in a more efficient boat that sustains the top speed for longer. Less heading movement and better stability allows for more powerful strokes and smoother glide.

SIZES - With the Sete we cover a wider athletes range weight, from 55kg to over 100kg. K1 and K2 Sete are now available in S, M, ML, L, XXL and XXXL sizes. The K4 will be available in 3 sizes: M, ML and L.

FITTINGS



See more at shop.nelo.eu

ADDRESS

Rua de Beche, 25
4485-105 Fajozes
Vila do Conde, Portugal

CONTACT

nelo@nelo.eu
(+351) 252 618 962
GPS: 41.326402, -8.717571